

# Tuba Sonata covered for cello

## first movement

Jim Tribble

5 *mp*

10 *mp*

16

22

28 *p*

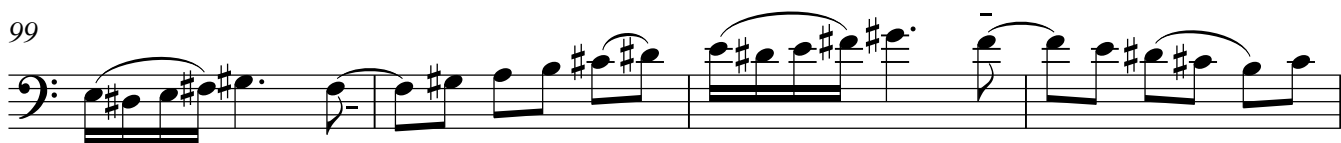
34 *mf*

41

47

53

58



109

*p*

This system contains measures 109 through 114. It begins with a treble clef and a key signature of one sharp (F#). The music features a series of eighth-note patterns with slurs and ties. A dynamic marking of *p* (piano) is placed below the staff. A fermata is positioned over the final note of the system.

115

*p*

This system contains measures 115 through 120. It continues with eighth-note patterns and slurs. A dynamic marking of *p* is present. A fermata is placed over the final note of the system.

121

*mp*

This system contains measures 121 through 124. The music consists of eighth-note patterns with slurs. A dynamic marking of *mp* (mezzo-piano) is indicated. A fermata is placed over the final note of the system.

125

*mp*

This system contains measures 125 through 128. It features eighth-note patterns with slurs. A dynamic marking of *mp* is shown. A fermata is placed over the final note of the system.

129

*mp*

This system contains measures 129 through 134. The notation includes eighth-note patterns with slurs. A dynamic marking of *mp* is present. A fermata is placed over the final note of the system.

135

*p*

This system contains measures 135 through 140. It continues with eighth-note patterns and slurs. A dynamic marking of *p* is indicated. A fermata is placed over the final note of the system.

141

*mf*

This system contains measures 141 through 144. The music features eighth-note patterns with slurs. A dynamic marking of *mf* (mezzo-forte) is shown. A fermata is placed over the final note of the system.

145

*mf*

This system contains measures 145 through 148. It consists of eighth-note patterns with slurs. A dynamic marking of *mf* is present. A fermata is placed over the final note of the system.

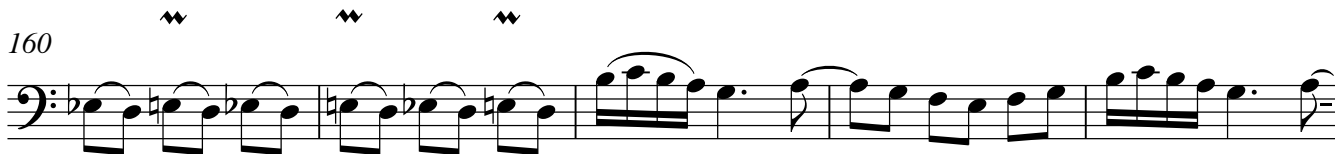
149



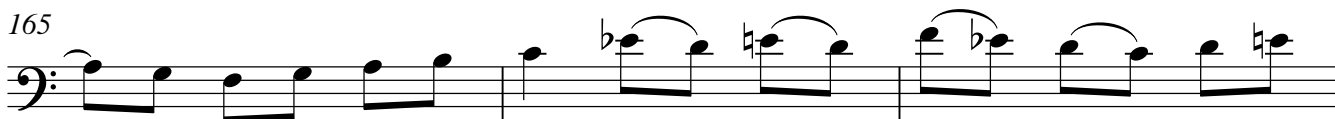
154



160



165



168



172



176

